

burmatex®

VOLUME ONE
alaska rainfall osaka



contents

about	04
our history	04
our environmental credentials	05
<hr/>	
volume one	
alaska	06 - 09
osaka	10 - 13
rainfall	14 - 17
mixing products (alaska, rainfall, osaka)	18 - 21
<hr/>	
behind the scenes	22 - 23



about us

With Yorkshire roots woven into the fabric of the company, we have a strong and established history.

Opening our doors in 1917 at the 11-acre site we still call home today, the business has grown, developed and flourished, while still retaining a sense of humble beginnings and regional charm, a quality that's close to our heart.

Fast forward to today we have grown into a company with global reach, currently exporting to over 50 countries worldwide.

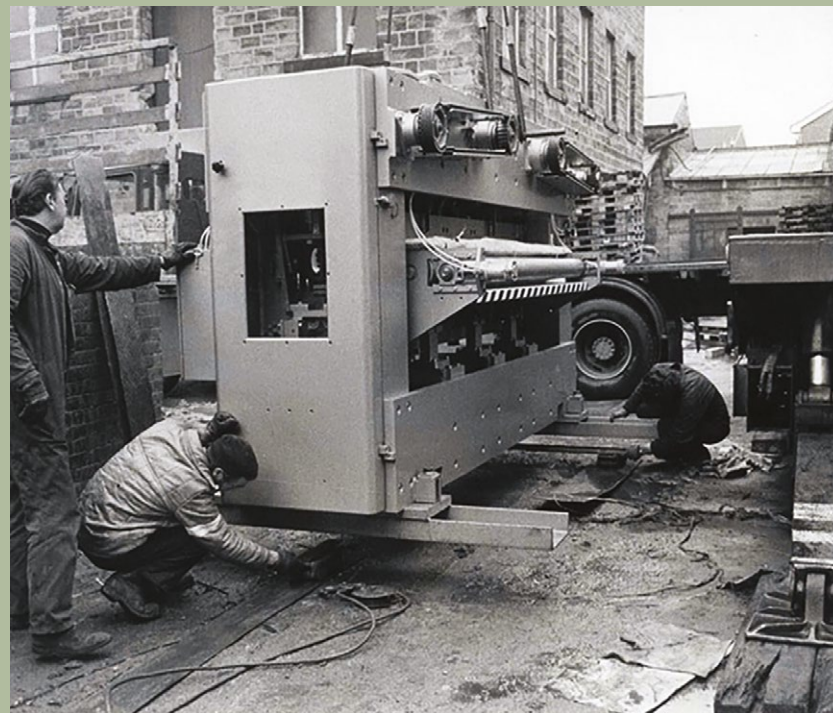


our history

Since 1917, making new materials from old has been at the core of our business, which saw key developments between 1930 to 1986.

From humble beginnings, supplying reclaimed fibre made from recycled parachute cord the business made a strategic decision to manufacture carpet tiles in the 1960's.

Since then the business has expanded its product range dramatically which now includes: multilevel loop, low level loop, textured loop, fibre bonded, structure bonded® and entrance matting products.



Ossett Mill new machine installation in 1970s

our environmental credentials

With a history influenced by recycling, we're committed to doing our bit to protect the planet. In keeping with our dedication to conserving energy and reducing waste, our flooring solutions are manufactured using 100% renewable electricity.

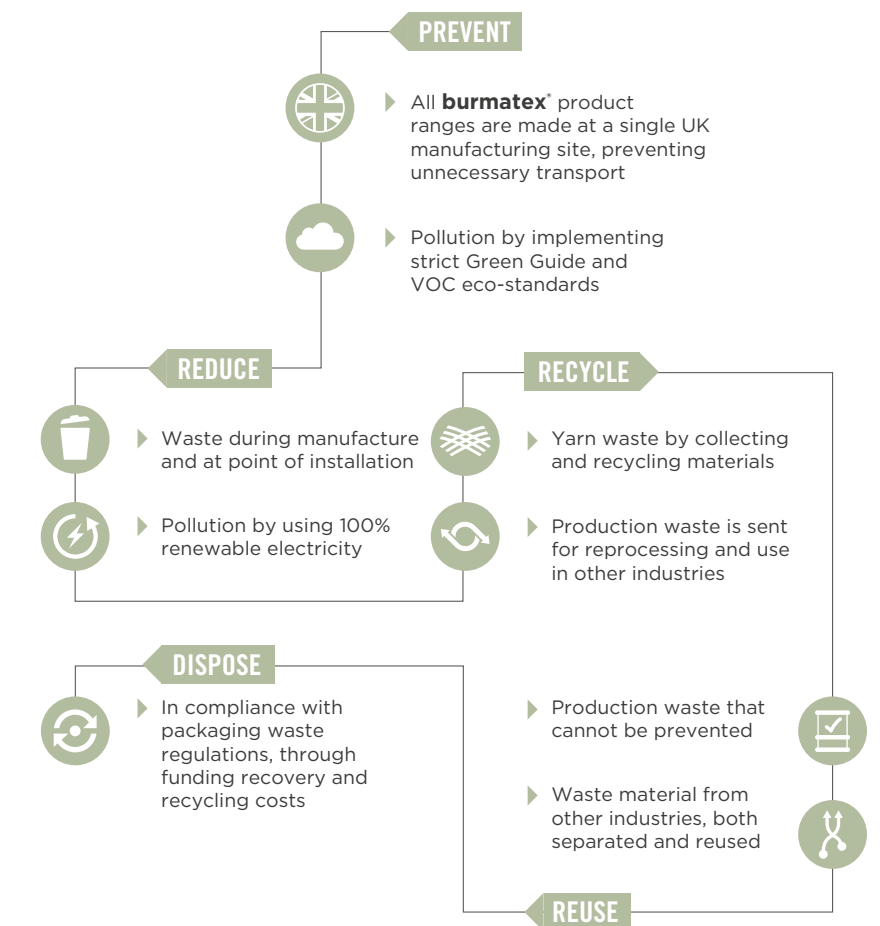
Our products contain more than 60% recycled materials, including yarn and fibre, our unique Accumen™ backing system utilises more than 75% recycled content which is sourced locally and we also use up to 50% recycled content in scrim and latex.

Not only that, we continuously assess and improve our manufacturing process to minimise the use of raw materials and power.

All our tufted products have BS EN 1307 Heavy Commercial use Class 33 classification.

We also hold environmental certifications against the most influential industry standards, which include:

- A or A+ Green Guide ratings
- A+ VOC rating
- The Building Information Foundation, Finland. Certified building materials with low emission class M1
- SKA standards and LEED accreditation for product range
- **burmatex®** products can contribute towards satisfying the following credits for LEED v4
 - NC-v4/CI-v4
 - MRc2/MRc3
 - MRc3/MRc4
 - EQc1, EQc2, EQc6, EQc9



**ENVIRONMENT
FRIENDLY
CARPETS**

alaska



Inspired by nature, **alaska** is a textural design incorporating classic greys and warm neutral hues. **alaska** was the first design to launch within the multilevel loop range.

Offering a practical yet calming interior design choice, **alaska** is practical and contemporary. Reminiscent of ripples on a lake, layers of rock and formations of ice – that wouldn't be out of place in the state that bears its name.





alaska lake and ice

Global travel provides inspiration, education and aspiration for many of our ranges and **alaska** is no different. With new experiences comes new influences taken from geography, geology, landscape and lifestyle. The textural finish of the product also works beautifully when used in deliberate contrast to some of our other ranges.



alaska lake, creek, valley husky and wolf



Pile Yarn Weight: 800g/m2

Luxury Rating Class: LC2

Wear Classification: Class 33

Yarn: 100% regenerated solution dyed nylon (Polyamide-PA)

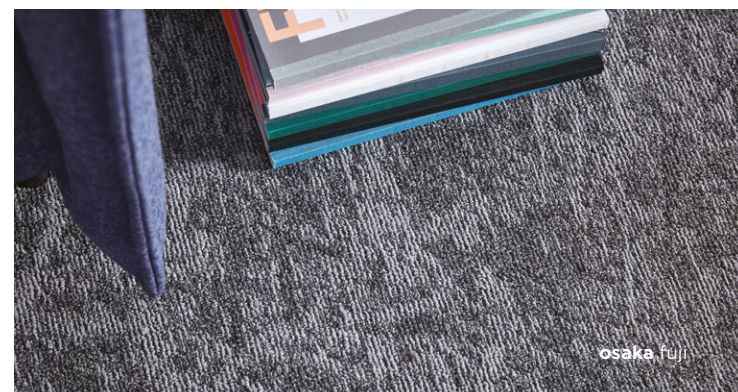
colour bank

- 01 - ice
- 02 - ridge
- 03 - point
- 04 - north
- 05 - moose
- 06 - anchor
- 07 - creek
- 08 - lake
- 09 - husky
- 10 - wolf
- 11 - valley
- 12 - spruce

osaka



An urban design with hints of nature, **osaka** celebrates the sharp contrast of ceremonial Japan replete with age old tradition, flourishing in a 21st century context.





Inspired by the designer's trip to vibrant Japan, this design offers an interesting and tonal carpeting solution to suit any space.

The geometric outline is inspired by the traditional practice of origami, combined with organic shapes, reminiscent of a bamboo forest floor. The abstract nature of the design, teamed with a diverse colour palette, allows it to be both soft and strong, expertly working with any modern interior space.



Pile Yarn Weight: 795g/m2

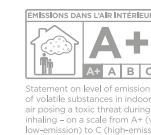
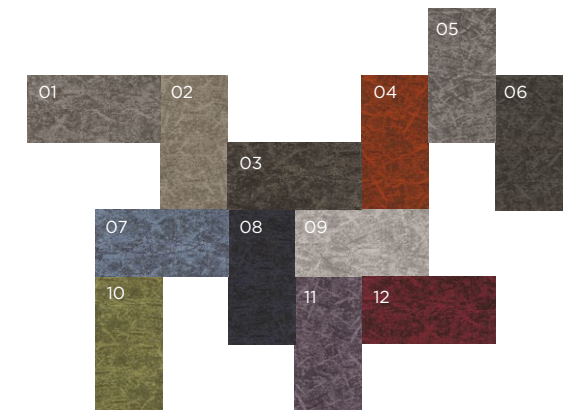
Luxury Rating Class: LC2

Wear Classification: Class 33

Yarn: 100% Solution-dyed high performance nylon-6,6 with pre-consumer 20% recycled content

colour bank

- 01 - haiku
- 02 - sesame
- 03 - sumi
- 04 - lantern
- 05 - arashi
- 06 - yari
- 07 - fuji
- 08 - inkpot
- 09 - mochi
- 10 - matcha
- 11 - orchid
- 12 - sakura

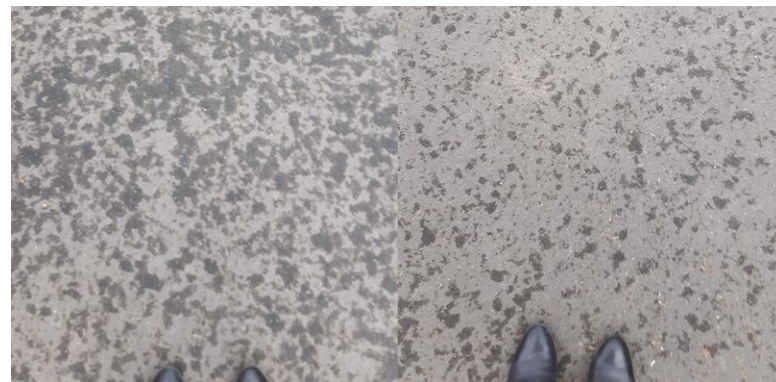


rainfall



As the name suggests, the patterns formed by rain drops inspired this soft and serene design.

With darker tones punctuating the surface of the pattern, **rainfall** is layered and soft in texture while offering a varied and randomly placed aesthetic.





Creating a calm effect once installed, this design is the perfect solution to create a peaceful office or retail environment.



Pile Yarn Weight: 910g/m2

Luxury Rating Class: LC3

Wear Classification: Class 33

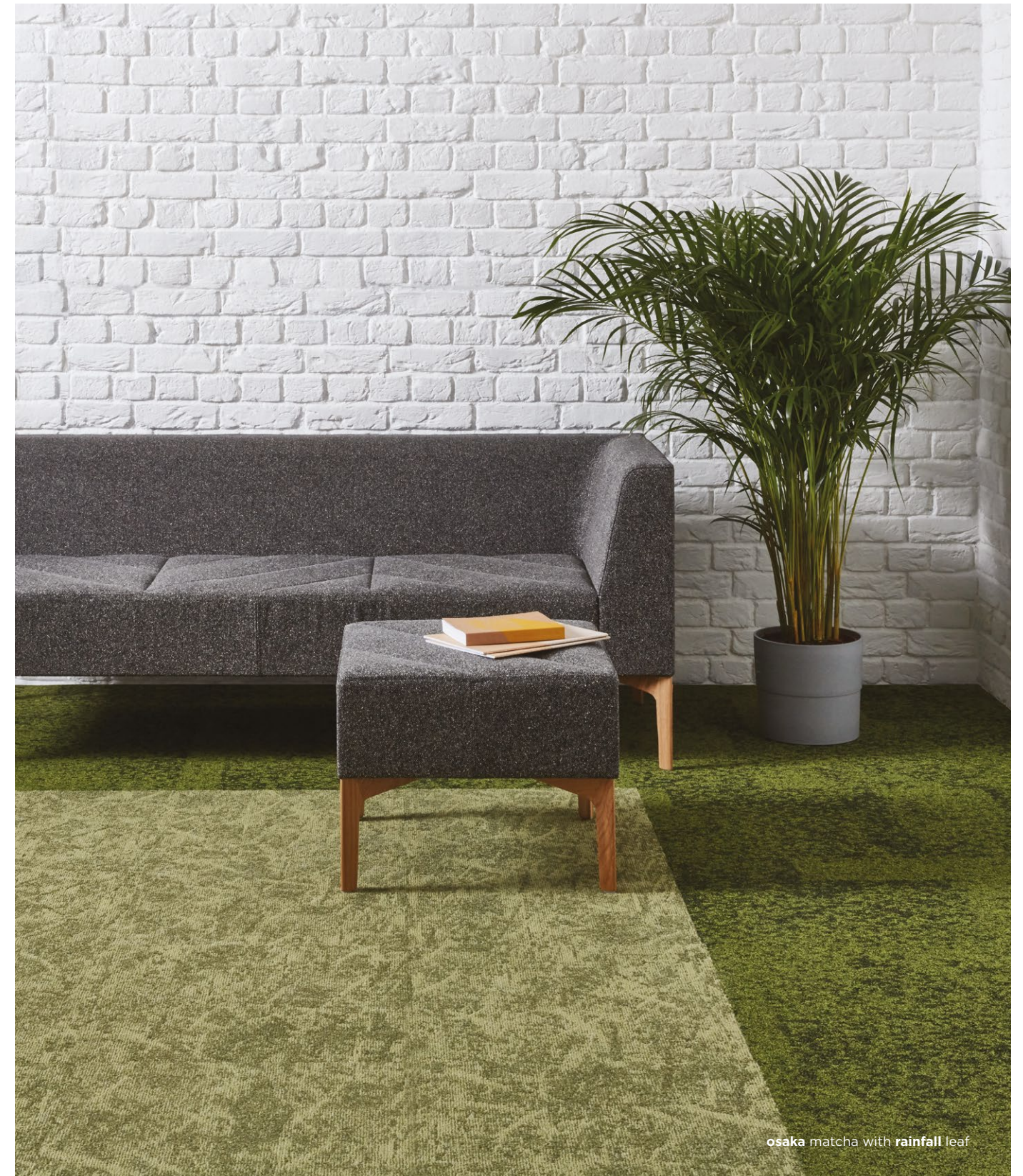
Yarn: 100% regenerated solution dyed nylon (Polyamide-PA)

colour bank

- 01 - light
- 02 - shade
- 03 - dark
- 04 - deep
- 05 - stone
- 06 - pave
- 07 - ground
- 08 - brick
- 09 - birch
- 10 - air
- 11 - bloom
- 12 - leaf

mixing alaska, rainfall, osaka

The beauty of our products means that they can be mixed and matched to create truly unique designs. All that's needed is a little inspiration. The following pages will show you how to use carpet tiles from different ranges to achieve the perfect look when planning your interior space.





rainfall dark with osaka mochi and yari

behind the scenes / studio

Creativity is at the heart of everything we do, championed by our team of in-house designers thoughtfully creating, developing and refining each range.

research and development



production and technical testing



photography and product launch

